

# New gel acquisition and analysis software on Chunkymonkey

## Kodak Digital Science 1D software

This software will allow you to take gel photos from the PC (no need to disconnect/re-connect the camera) and preview them, deleting as necessary. Also no need to create phantom folders everytime you take a picture. The software also allows you to specific gel size (for image zoom settings), stain used (Ethidium Bromide or Sybr Green), and exposure (are your bands bright or faint).

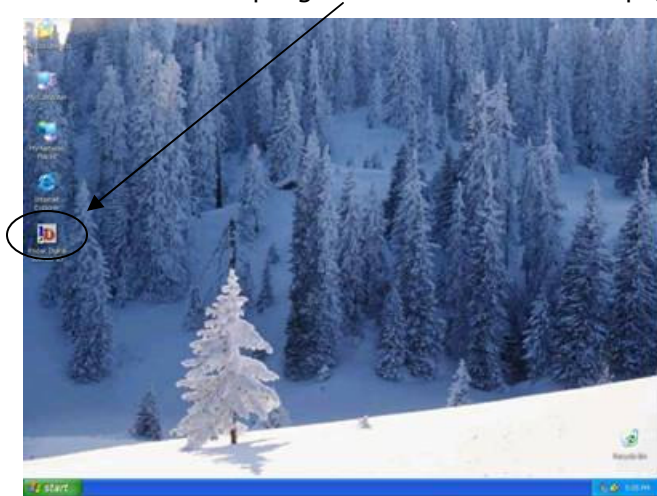
It will then delete the images from the camera and import them into an advanced image analysis program. In this program you can adjust images (invert, sharpen, subtract background etc) and then identify lanes and measure molecular weight and intensity of bands compared to your standard.

All in all it should make life much easier..... and we had it all along!

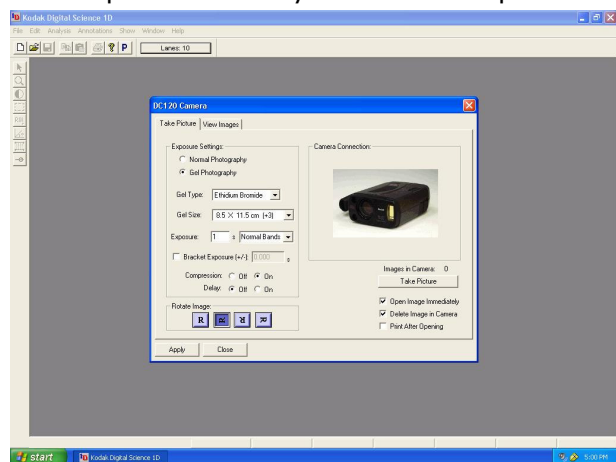
Here's a quick run down how to use it.

Log in as "lab user" – note new password.

Double-click the program icon on the desktop (Kodak Digital Science 1D)



To take a picture of a gel, first select 'File', then 'Acquire', then DC40/DC120 Camera (make sure camera is connected to PC)  
The following screen appears: this allows you to take a picture directly from the computer.



Select 'Gel Photography'

Chose 'Gel Type', either Ethidium Bromide or Sybr Green.

Chose 'Gel size' – use rough estimate.

Chose 'Exposure' – faint, normal or bright bands are defaults or you can adjust exposure time.

Chose 'Rotate image' according to orientation on gel box.

Select 'Open Immediately' and 'Delete Image in Camera'

Then hit 'Take Picture'



Your image will appear in the image analysis module of the software. Here you can adjust/resize it etc or analyze band sizes and intensity compared to standards/markers.

For more advanced analysis you'll have to read the software manual or ask me. The basics are very simple though.

Eoin

11/03/03